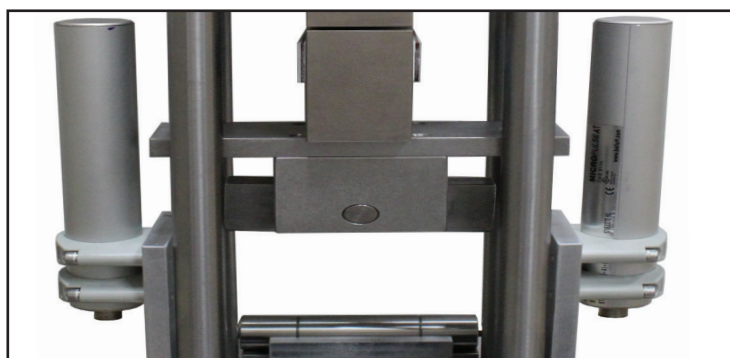
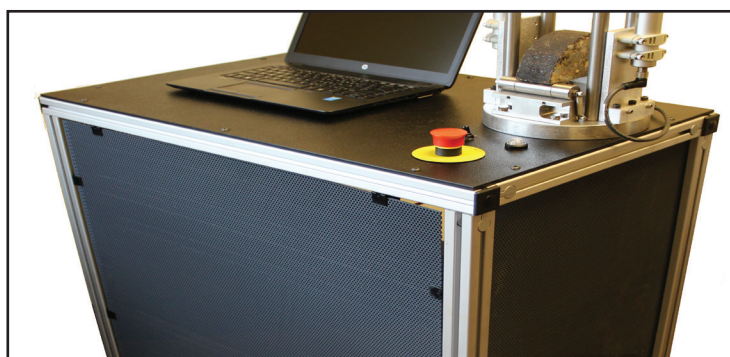


IDEAL Plus

Runs IDEAL, I-FIT, LSU SCB, TSR and more!

Precise test rate control!



Machine Configuration

- Stand-alone cart provides dedicated work space and allows hassle-free portability
- Re-configuration spring rollers for running various SCB tests (I-FIT, LSU SCB, etc.)
- Standard 13,000lbf capacity for running IDEAL and TSR tests
- High performance valve option for dynamic tests and precise load control

Load Line Displacement (LLD) Measurement

- No need to worry about mounting an LVDT or crushing one by running over LVDT travel limits.
- Optional patent pending LLD average measurement and control gives the highest confidence in test rate control - averages the displacement on the left and right side of the fixture.

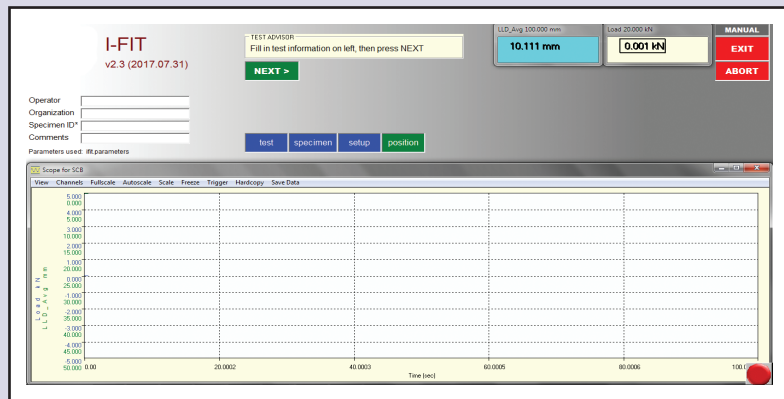
IDEAL Plus

Specifications	
Dimensions (L x W x H)	31.5in x 20in x 57in
Shipping Dimensions (L x W x H)	37in x 27in x 65in
Weight	361 lbs
Actuator Speed	900 in/min
Force	13,000 lbf capacity
Stroke	2in (50mm)
Data Acquisition and Output	Test Advisor Software or ICT software output
Electrical Specifications	115 VAC/20 A AMP receptacle

Software

One Click Result

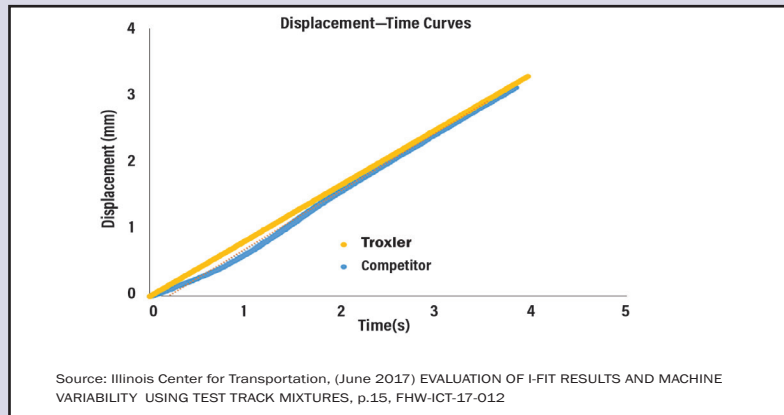
TEST Advisor software feature guides user through the testing process



System Performance

Precise Test Control

Just like the universal machines found in top research labs, this product utilizes the benefit of servo-hydraulics to achieve precise test rate control throughout the duration of the test. When testing time-dependent materials like asphalt, precise test rate control will give you better confidence that stiffness measurements are a result of the material not the test machine.



Made in USA



The Leader in Construction Testing Equipment

Information provided herein is based on test data believed to be reliable. In as much as Troxler Electronic Laboratories, Inc. has no control over the manner in which others may use this information, it does not guarantee the results to be obtained. In addition, Troxler does not make any express or implied warranty of merchantability or fitness for a particular purpose other than that for which the equipment is originally intended.

3008 E. Cornwallis Road
 Research Triangle Park, NC 27709
 1-877-TROXLER (1-877-876-9537)
 1-919-549-8661 (International)
www.troxlerlabs.com